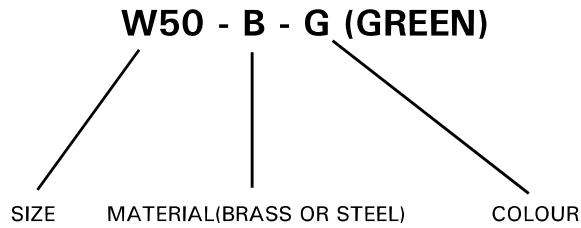
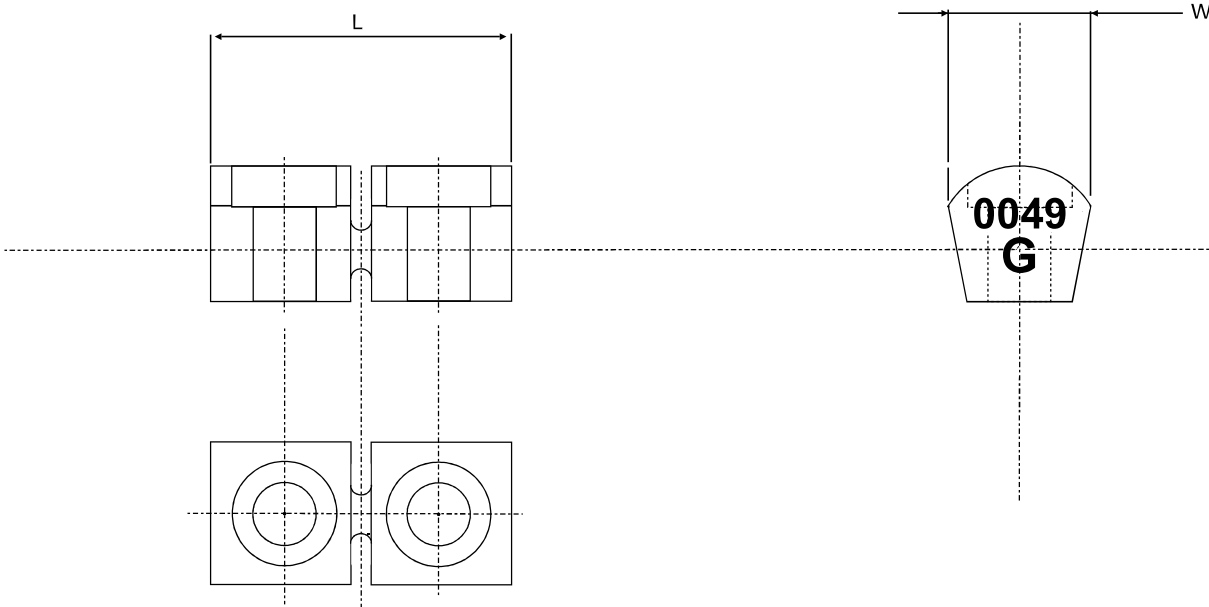


IDENTIFY THE HOWDON WEDGEPIN

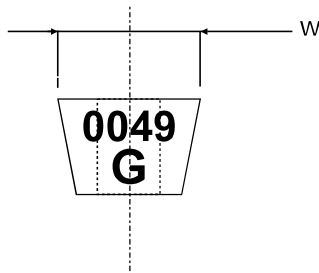
WEDGEPINS ARE CODED BY SIZE, MATERIAL AND COLOUR AS FOLLOWS



The Howdon Wedgepin will have the Colour code and the batch number marked on each end as shown below (Some of the original designs may not have a batch number).



ORIGINAL WEDGEPIN DESIGN (END VIEW)



SIZE	L (mm)	W (mm)
W18	17	8
W25	20	11
W37	30	12.7
W50	40	19.05
W50L	50	19.05
W75	60	25.4
W100	70	31.75
W120	110	40
W125	90	38.10

THIS DOCUMENT IS THE INTELLECTUAL PROPERTY OF HOWDON POWER TRANSMISSION LTD. AND SUBJECT TO COPYRIGHT.