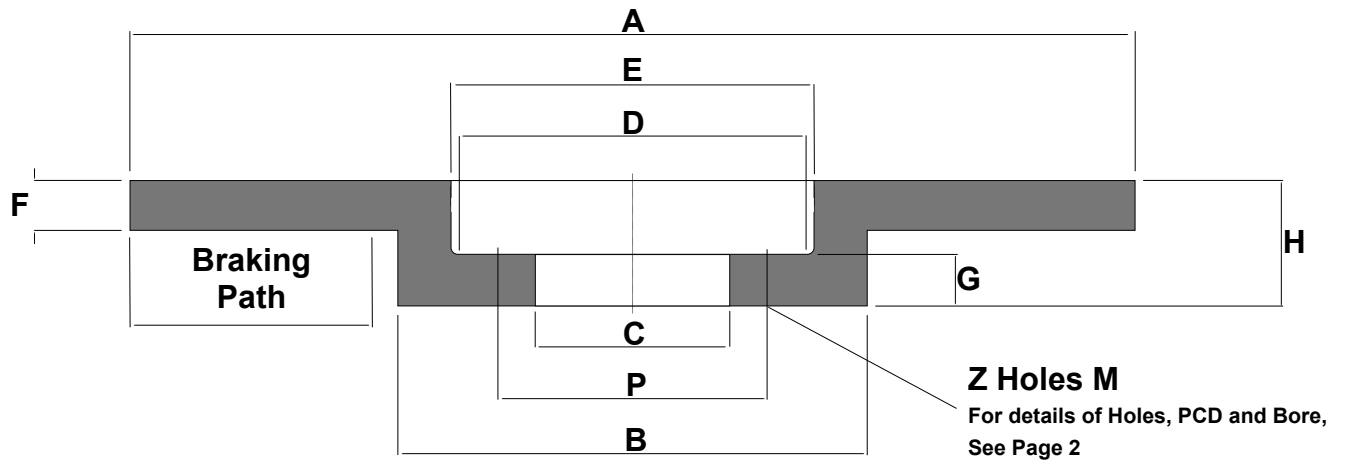


Brake Discs



Material: S.G. IRON
 BS2789 — SNG420/12
 MACHINED ALL OVER.

Thickness Variation of disc flange: 0.05mm total variation
 Surface finish 2um (0.002mm) = 80 micro-inch or better.

Table 1 - Range of 12.7mm thick Brake Discs

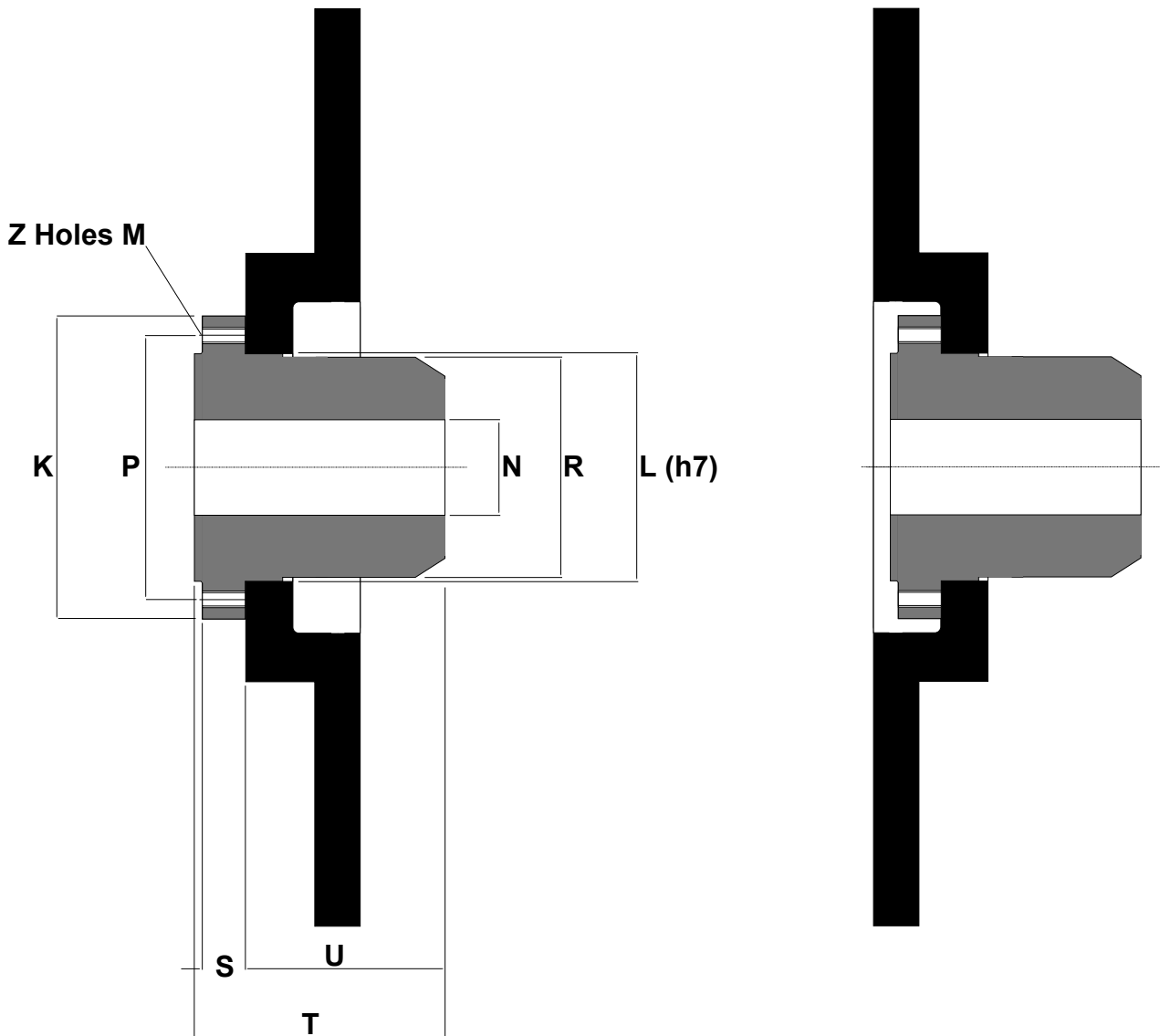
Nominal Diameter		Part No.	A	B	C*	D	E	F	G	H	WR ² (Kg ^m ²)	Weight (Kg)	Max. Safe Disc Speed (Rev/min)
(mm)	(Inch)												
250	10	6830261	250	128	30	116	120	12.7	6	36	0.04	4	6500
300	12	6830259	305	166	51	140	148	12.7	12.7	41	0.09	7.3	6000
350	14	6830085	356	210	76	171	184.1	12.7	15.9	54	0.17	10.9	5100
400	16	6830138	406	260	102	222	234.9	12.7	12.7	54	0.28	14.1	4400
460	18	6830080	457	311	102	273	285.7	12.7	15.9	54	0.48	19.1	3900
515	20 1/4	6830005	514	368	102	336	349.2	12.7	15.9	54	0.75	22.7	3500
610	24	6830081	610	464	102	425	438.1	12.7	15.9	54	1.57	33	2900
710	28	6830114	711	565	102	527	539.7	12.7	19	54	3.2	52.3	2500
810	32	6830125	813	660	102	593	609.6	12.7	25.4	54	6.57	85.5	2200
915	36	6830142	914	762	102	695	711.2	12.7	25.4	54	10.8	110.9	1900

*Dimensions and specifications may change for improvement without notice.

*Nominal minimum diameters as shown. Bored and drilled to requirements at extra cost.
 Sizes 250 to 610 usually from stock.
 25.4 mm thick Brake Discs available to order.
 Non standard Brake Discs can be supplied to order.
 Minimum recommended clearance for bolt holes, 0.03 mm/cm of PCD
 E.g. for a 25 cm PCD, clearance = 0.03 x 25 = 0.75 mm.

All dimensions in mm. (Unless shown)

Discs HUBS



Material: GREY CAST IRON / EN8 STEEL.

Table 2 - Range of Hubs used with Brake Discs

Hub Size	Part No.	K	L (h7)	N* from to	P	R	S	T	U	Z	M	Disc Size	Max. Brake Torque (kNm)	WR ² (Kgm ²)
112	8100166	99	65	14 - 42	82	64.5	14	58	42.5	6	M8	250	1.1	0.00097
168	8100167	146	105	28 - 65	126	104.5	18	87	66.5	8	M10	300 and above	3.6	0.0088
240	8100168	200	147	60 - 95	175	146	21	117	93.5	10	M12	400 and above	9.5	0.044
330	8100169	272	209	75 - 130	240	208	27	155	125.5	10	M16	400 and above	24	0.23
370	8100170	308	242	90 - 150	274	241	29	176	143	11	M16	515 and above	30	0.35

*Dimensions and specifications may change for improvement without notice.

*Hubs can be supplied with parallel or taper bores and keywayed to order, at extra cost.
 Sizes 112 to 330 usually from stock.
 25.4 mm thick Brake Discs available to order.
 Non standard Hubs can be supplied to order.

All dimensions in mm. (Unless shown)