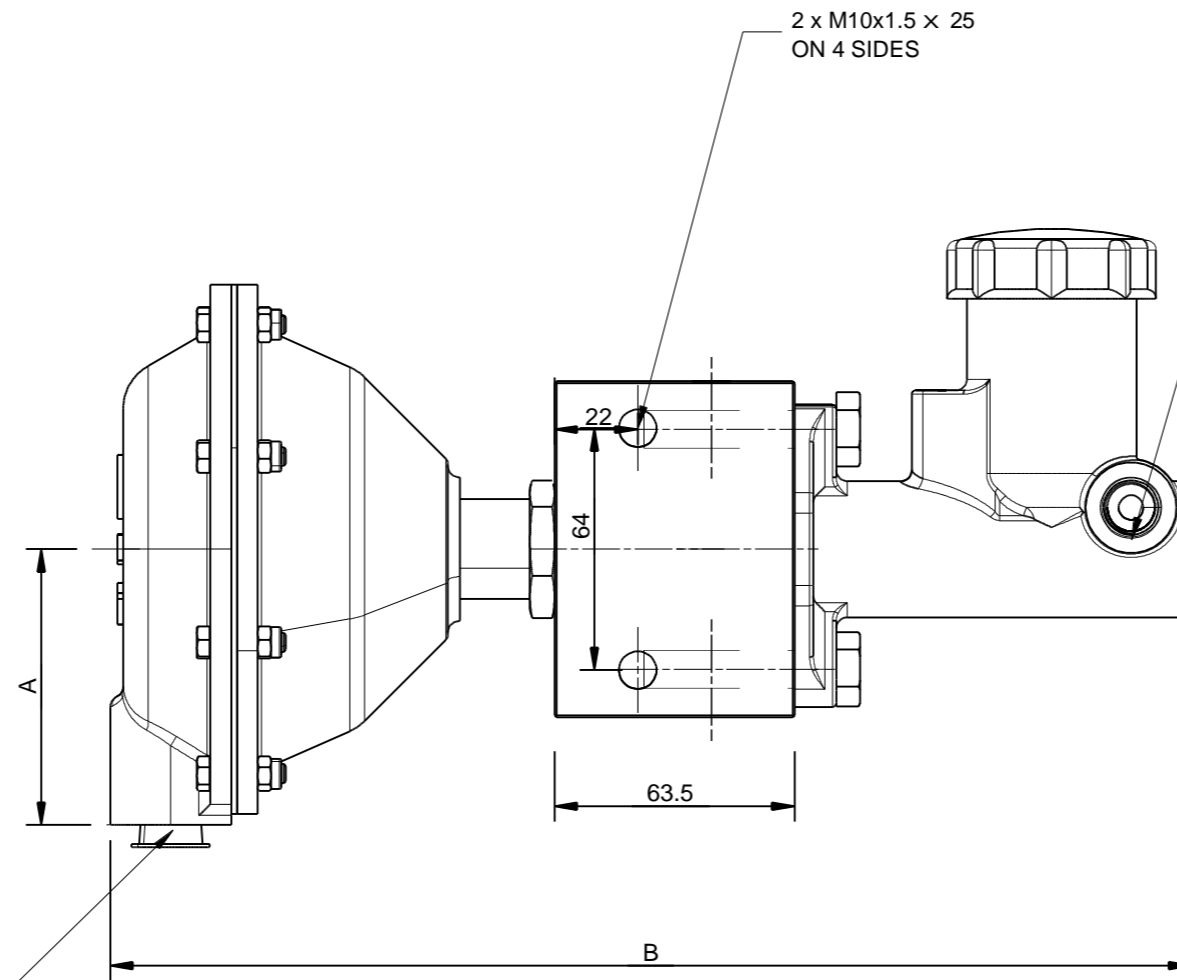
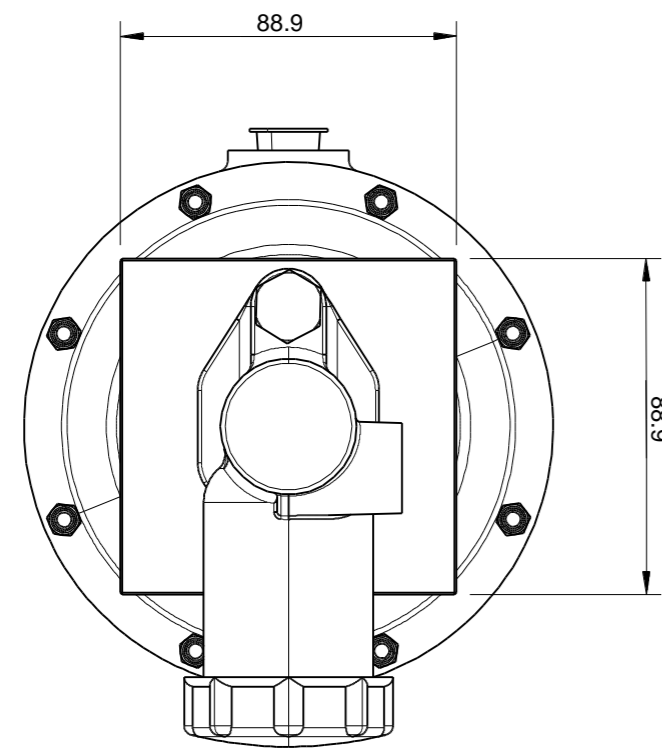


THIS DOCUMENT IS THE INTELLECTUAL PROPERTY OF HOWDON POWER TRANSMISSION LTD. AND SUBJECT TO COPYRIGHT.

RevNo	Revision note	Date	Signature	Checked
1	ORIGINAL	12-04-2010	HSP	HPM
2	BLOCK DESIGN CHANGE	14-07-2010	HSP	HPM
3	NEW APPROX RATIOS ADDED- 01 WAS 12/1, 02 WAS 17/1 & 03 WAS 28/1	04-08-2010	HSP	HPM
4	NEW MASTER CYLINDER NOTES ADDED.	27-08-2010	HSP	HPM
5	AIR INLET & HYDRAULIC OUTLET DETAILS ADDED.	21-09-2010	HSP	HPM



AIR INLET
3/8 TIGHTENING TORQUE 46 Nm.
1/4 TIGHTENING TORQUE 10 Nm.

RATIOS (APPROX):	PART NO:	DIM A	DIM B	AIR INLET	HYDRAULIC OUTLET
8 / 1	PART: 2013-01	60mm	275mm Approx	G1/4(1/4 BSP)	M14x1.5-6H (AS SAE J1290 MAR85)
13 / 1	PART: 2013-02	70mm	286mm Approx	G3/8(3/8 BSP)	M14x1.5-6H (AS SAE J1290 MAR85)
20 / 1	PART: 2013-03	91mm	286mm Approx	G3/8(3/8 BSP)	M14x1.5-6H (AS SAE J1290 MAR85)

CAUTION - PLEASE CHECK THE PRESSURE YOU REQUIRE AND ADJUST THE INPUT PRESSURE TO SUIT. ALL RATIOS ARE APPROXIMATE AND ARE DEPENDENT ON EFFICIENCIES IN YOUR SUPPLY. TO ENSURE YOU ARE USING THE CORRECT OUTPUT PRESSURE ALWAYS TEST WITH A SUITABLE PRESSURE GAUGE.

NOTE - AIR THRUSTERS HAVE A MAX PSI THIS IS LOCATED ON THE DATA SHEET AND LABEL.

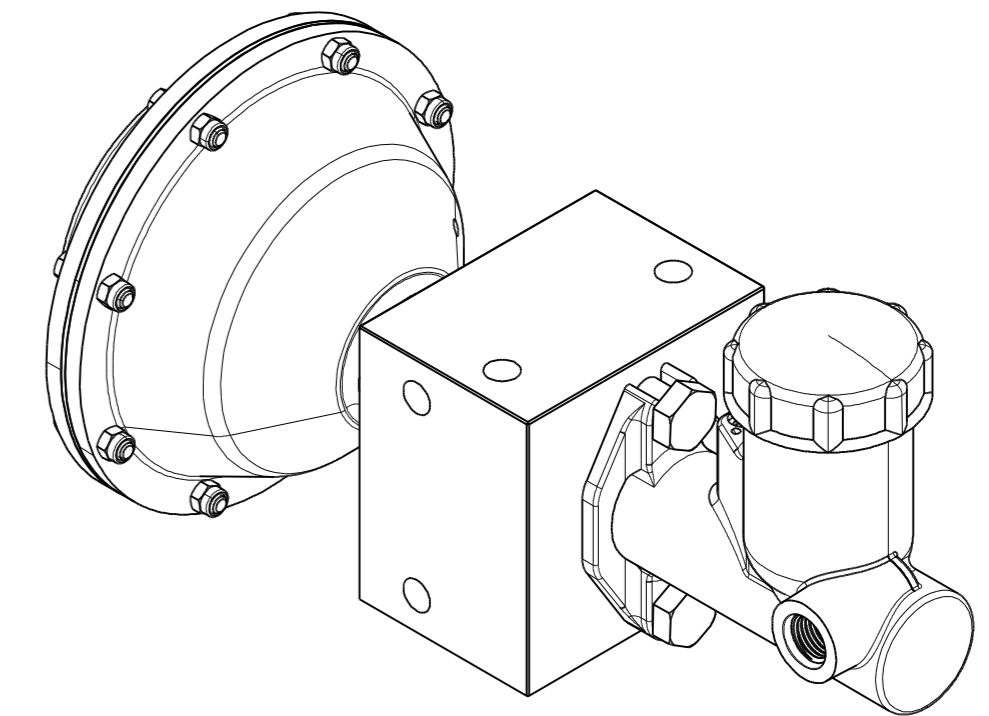
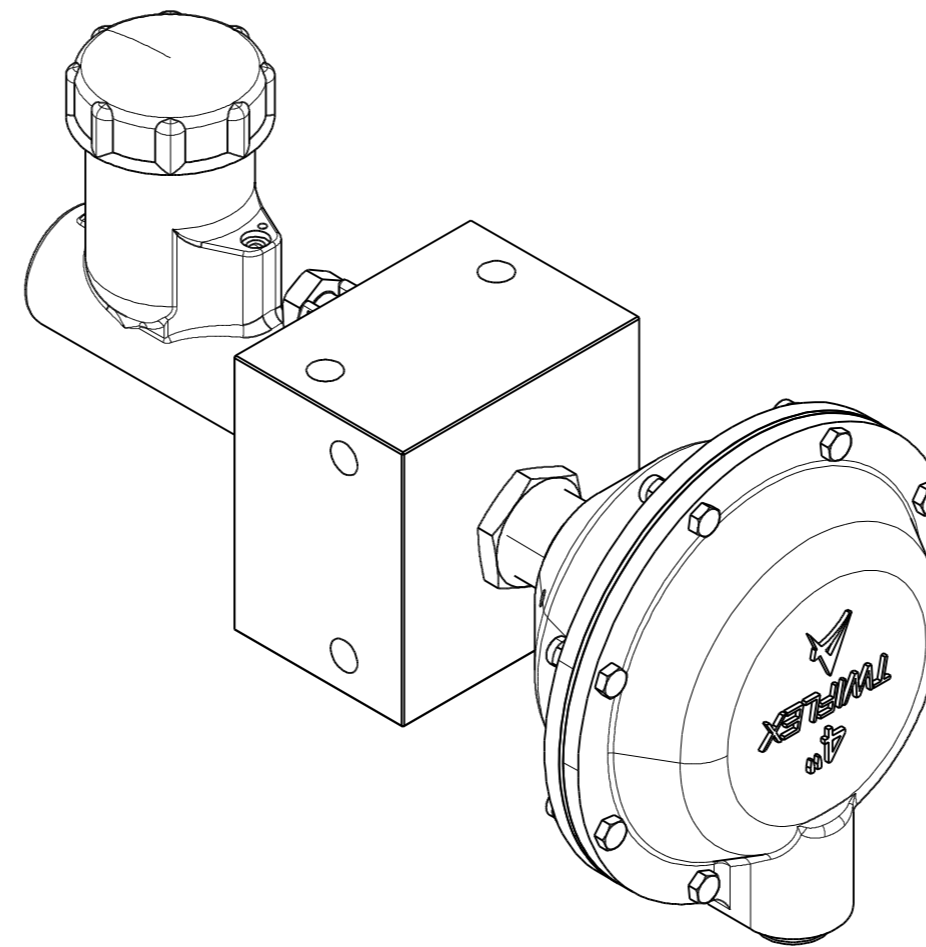
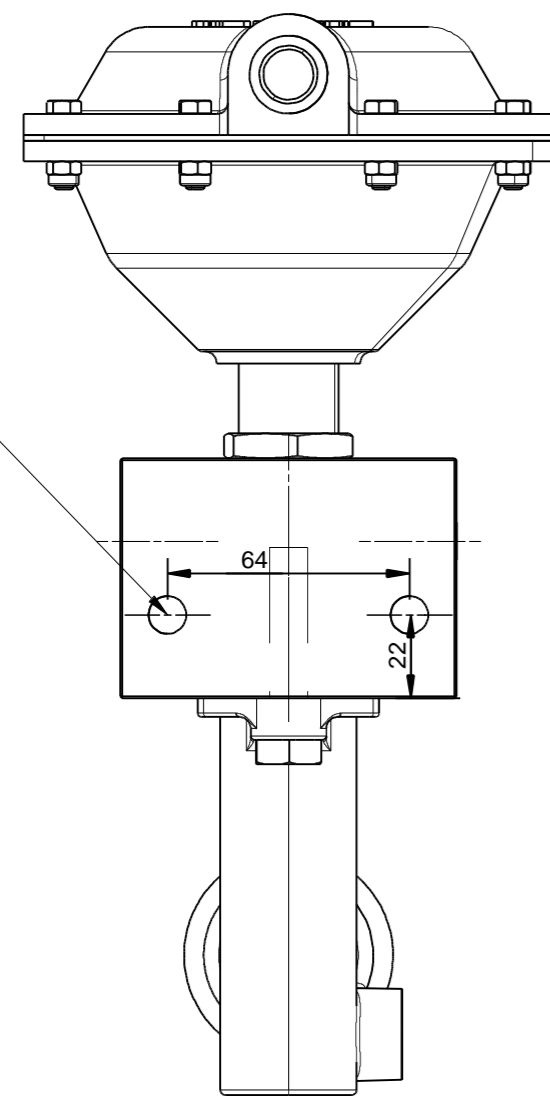
PLEASE ENSURE ALL FIXINGS ARE SECURE BEFORE OPERATION.

MASTER CYLINDER:

**FLUID: MINERAL
NOMINAL WORKING STROKE: 36 mm PROVIDING 18.2 cm³ AVAILABLE FLUID VOLUME.
RESERVOIR FLUID VOLUME: 44 cm³
MAXIMUM WORKING PRESSURE: 105 BAR.
MINIMUM BURST PRESSURE: 315 BAR.**

THIS ASSEMBLY IS SUITABLE FOR USE WITH MINERAL FLUID ONLY. USE OF INAPPROPRIATE FLUID MAY CAUSE SEAL DAMAGE RESULTING IN SYSTEM FAILURE.

2 x M10x1.5 x 25



THIS DOCUMENT IS THE INTELLECTUAL PROPERTY OF HOWDON POWER TRANSMISSION LTD. AND SUBJECT TO COPYRIGHT.

HOWDON POWER TRANSMISSION LTD.
PAGANHILL LANE, CAINSCROSS,
STROUD, GLOUCESTERSHIRE. GL5 4JT.
TEL: 01453 750814 / FAX: 01453 765320

AIR / HYDRAULIC INTENSIFIER VARIOUS RATIOS
AIR APPLIED SPRING RELEASED

DRAWING: 2013-00 Edition A Sheet 1 - OF - 3